

Operating Instructions
CD Stereo System

Model No. **SC-PM250**



Thank you for purchasing this product.
For optimum performance and safety, please read these instructions carefully.
Please keep this manual for future reference.

*"EB" indicates the United Kingdom model.

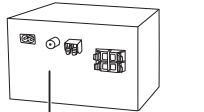
Manufactured by: Panasonic Corporation
Kadoma, Osaka, Japan
Importer for Europe: Panasonic Marketing Europe GmbH
Panasonic Testing Centre
Winsbergring 15, 22525 Hamburg, Germany

Panasonic Corporation
Web Site: <http://panasonic.net>

RQT9926-B
L1402CH0

Your system and the illustrations can look differently.
These operating instructions are applicable to the following system.

System	SC-PM250
Main unit	SA-PM250
Speakers	SB-PM02



Back of product

Supplied accessories

Check and identify the supplied accessories.

For the United Kingdom and Ireland
Use numbers indicated in parentheses when asking for replacement parts. (Product numbers correct as of February 2014. These may be subject to change.)

For the United Kingdom and Ireland

1 AC mains lead
(K2C2TY00097)

For Continental Europe, Australia and New Zealand

1 AC mains lead

For Asia and the Middle East

3 AC mains leads

For Saudi Arabia

For Thailand

For others

For Australia and New Zealand

1 AM loop antenna

For the United Kingdom and Ireland

1 Antenna plug adaptor
(K1Y20200013)

1 FM indoor antenna
(RSAX0002)

1 Remote control
(N2QAYB000984)

Safety information for customers in the EU

CE 1177

Declaration of Conformity (DoC)

Hereby, "*Panasonic Corporation*" declares that this product is in compliance with the essential requirements and other relevant provisions of Directive 1999/5/EC.

Customers can download a copy of the original DoC to our R&TTE products from our DoC Server:
<http://www.doc.panasonic.de>
Contact to Authorised Representative: Panasonic Marketing Europe GmbH, Panasonic Testing Centre, Winsbergring 15, 22525 Hamburg, Germany

This product is intended for general consumer. (Category 3)

Ελληνικά
Δήλωση συμμόρφωσης (DoC)

Με την παρούσα, η "*Panasonic Corporation*" δηλώνει ότι το προϊόν αυτό είναι σύμφωνο με τις βασικές απαιτήσεις και άλλες σχετικές διατάξεις της οδηγίας 1999/5/ΕΚ.

Οι πελάτες μπορούν να κατεβάσουν ένα αντίγραφο του πρωτοτύπου DoC για τα R&TTE προϊόντα μας από τον DoC server μας:
<http://www.doc.panasonic.de>
Στοιχεία επικοινωνίας Εξουσιοδοτημένου Αντιπροσώπου: Panasonic Marketing Europe GmbH, Panasonic Testing Centre, Winsbergring 15, 22525 Hamburg, Γερμανία

Αυτό το προϊόν προορίζεται για καταναλωτές. (Κατηγορία 3)

Português
Declaração de Conformidade (DoC)

Com o presente documento, a "*Panasonic Corporation*" declara que este produto é conforme os requisitos específicos e demais especificações referentes à Directriz 1999/5/EC.

Os clientes podem baixar uma cópia da declaração de conformidade (DoC) para nossos produtos R&TTE do Server DoC:
<http://www.doc.panasonic.de>
Contacto o representante autorizado: Panasonic Marketing Europe GmbH, Panasonic Testing Centre, Winsbergring 15, 22525 Hamburg, Alemanha

Este produto destina-se ao consumidor geral. (Categoria 3)

Lietuviškai
Atitikties deklaracija (AD)

Bendrovė "*Panasonic Corporation*" patvirtina, kad šis gaminytis tenkina direktyvos 1999/5/EB esminius reikalavimus ir kitas taikytinas nuostatas.

Mūsų R&TTE gaminių originalios atitikties deklaracijos kopiją klientai gali atsisiųsti iš mūsų AD serverio:
<http://www.doc.panasonic.de>
Įgaliojimo atstovo adresas: "Panasonic Marketing Europe GmbH", Panasonic Testing Centre, Winsbergring 15, 22525 Hamburg, Vokietija

Šis gaminytis skirtas bendrajam vartojimui. (3 kategorija)

Slovensko
Izjava o skladnosti (DoC)

S pričujočo izjavo podjetje "*Panasonic Corporation*" izjavlja, da svoji izdelki skladni s poglavitnimi zahtevami in drugimi odgovarjajočimi predpisi direktive 1999/5/ES.

Stranka lahko naloži izvod izvirnega DoC o naših izdelkih R&TTE s spletniškega DoC:
<http://www.doc.panasonic.de>
Pooblaščen zastopnik: Panasonic Marketing Europe GmbH, Panasonic Testing Centre, Winsbergring 15, 22525 Hamburg, Nemčija

Izdelek je namenjen splošni uporabi. (Razred 3)

Slovensky
Vyhľadanie o zhode (DoC)

"*Panasonic Corporation*" týmto prehlasuje, že tento výrobok je v zhode so základnými požiadavkami a ďalšími príslušnými ustanoveniami smernice 1999/5/ES.

Zákazníci si môžu stiahnuť kópiu pôvodného DoC na naše R&TTE výrobky z nášho servera DoC:
<http://www.doc.panasonic.de>
Kontakt na splnomocneného zástupcu: Panasonic Marketing Europe GmbH, Panasonic Testing Centre, Winsbergring 15, 22525 Hamburg, Nemecko

Tento produkt je určený pre všeobecného spotrebiteľa. (Kategória 3)

Norsk
Samsvarserklæring (DoC)

"*Panasonic Corporation*" erklærer at utstyret er i samsvar med de grunnleggende krav og øvrige relevante krav i direktiv 1999/5/EF.

Kundene kan laste ned en kopi av den originale samsvarserklæringen (DoC) for vårt R&TTE utstyr fra vår DoC server:
<http://www.doc.panasonic.de>
Kontakt vår autoriserte representant: Panasonic Marketing Europe GmbH, Panasonic Testing Centre, Winsbergring 15, 22525 Hamburg, Tyskland

Utstyret er beregnet på den vanlige forbruker. (Klasse 3)

Eesti keel
Vastavusdeklaratsioon (DoC)

"*Panasonic Corporation*" kinnitab käesolevaga, et see toode on vastavuses põhiliste nõuete ja muude direktiivi 1999/5/EÜ asjakohaste sätetega.

Kliendid saavad koopia meie R&TTE toodetele kehtiva originaalvastavusdeklaratsiooni koopia alla laadida meie DoC serverist:
<http://www.doc.panasonic.de>
Võtte ühendust võltatud esindajaga: Panasonic Marketing Europe GmbH, Panasonic Testing Centre, Winsbergring 15, 22525 Hamburg, Germany

See toode on mõeldud tavakasutajale. (III kategooria)

Latviski
Atbilstības deklarācija (DoC)

Kompānija "*Panasonic Corporation*" ar šo paziņo, ka šis izstrādājums atbilst būtiskām prasībām un citām saistošām Direktīvas 1999/5/EK prasībām.

Pircēji var lejupielādēt oriģinālo DoC kopiju mūsu R&TTE izstrādājumos no mūsu DoC servera:
<http://www.doc.panasonic.de>
Lūdzam sazināties ar pilnvaroto pārstāvi: Panasonic Marketing Europe GmbH, Panasonic Testing Centre, Winsbergring 15, 22525 Hamburg, Germany

Šis izstrādājums ir paredzēts parastam patērētājam. (3. kategorija)

Български
Декларация за съответствие (DoC)

"*Panasonic Corporation*" декларира, че този продукт съответства на съществените изисквания и другите приложими разпоредби на Директива 1999/5/EC.

Потребителите могат да свалят копия от оригиналните DoC към нашите продукти от тина R&TTE от съвърха, на който се съхраняват DoC:
<http://www.doc.panasonic.de>

За контакт с оторизиран представител: Panasonic Marketing Europe GmbH, Panasonic Testing Centre, Winsbergring 15, 22525 Hamburg, Германия

Този продукт е предназначен за обща употреба. (Категория 3)

Română
Declarație de Conformitate (DoC)

Prin prezenta, societatea "*Panasonic Corporation*" declară că produsul este conform cu cerințele esențiale și cu alte norme corespunzătoare Directivei 1999/5/EC.

Clienții pot descărca o copie a DoC-ului original al produselor noastre R&TTE de la adresa noastră DoC din Internet:
<http://www.doc.panasonic.de>
Contact la Reprezentanta autorizată: Panasonic Marketing Europe GmbH, Panasonic Testing Centre, Winsbergring 15, 22525 Hamburg, Germania

Acest produs a fost proiectat pentru clientela generală. (Categorie 3)

Magyar
Megfelelőségi Nyilatkozat (DoC)

Ezennel a "*Panasonic Corporation*" kijelenti, hogy a jelen termék kielégíti az 1999/5/EK irányelv létfentosságú követelményeit és más vonatkozó rendelkezéseit.

A vásárlók letölthetik az R&TTE termékek eredeti DoC másolatát a DoC szerverünkről:
<http://www.doc.panasonic.de>
Forduljon a hivatalos márkaképviselethez: Panasonic Marketing Europe GmbH, Panasonic Testing Centre, Winsbergring 15, 22525 Hamburg, Németország

A terméket általános fogyasztóknak szánták. (3-as kategória)

Specifications

Amplifier section

RMS output power stereo mode	
Front Ch (both ch driven)	
10 W per channel (6 Ω), 1 kHz, 10% THD	
Total RMS stereo mode power	20 W
For Asia and the Middle East	
PMPO output power	220 W

Tuner, terminals section

Preset memory	FM 30 stations
For Australia and New Zealand	AM 15 stations
Frequency modulation (FM)	
Frequency range	87.50 MHz to 108.00 MHz (50 kHz step)
Antenna terminals	75 Ω (unbalanced)
For Australia and New Zealand	
Amplitude modulation (AM)	
Frequency range	522 kHz to 1629 kHz (9 kHz step)
	520 kHz to 1630 kHz (10 kHz step)

Disc section

Disc played (8 cm or 12 cm)
CD, CD-R/RW (CD-DA, MP3*)

Pick up
Wavelength 790 nm (CD)
* MPEG-1 Layer 3, MPEG-2 Layer 3

USB section

USB port	
USB standard	USB 2.0 full speed
Media file format support	MP3 (*.mp3)
USB device file system	FAT12, FAT16, FAT32
USB port power	DC OUT 5 V, 500 mA

Placement of speakers



The left and right speakers are the same.
You cannot remove the net of the speakers.

Use only the supplied speakers.
You can cause damage to the system and decrease the sound quality if you use other speakers.

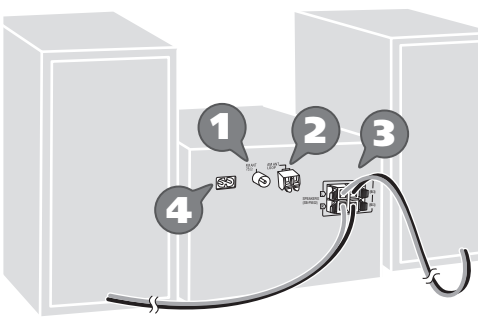
- Note:**
- Keep your speakers more than 10 mm from the main unit for ventilation.
 - Put the speakers on a flat safe surface.
 - These speakers do not have magnetic shielding. Do not put them near TVs, PCs or other equipment easily influenced by magnetism.
 - When you play at high levels for a long period, it can cause damage to the speakers and decrease the life of the speakers.
 - Decrease the volume in these conditions to prevent damage:
 - When the sound is distorted.
 - When you adjust the sound quality.

CAUTION!

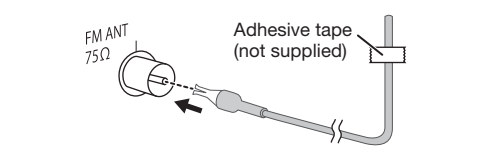
- Use the speakers only with the recommended system. If not, you can cause damage to the amplifier and speakers and can cause a fire. Consult an approved service personnel if damage occurs or if there is a sudden apparent change in performance.
- Do the procedures included in these instructions when you attach the speakers.

Making the connections

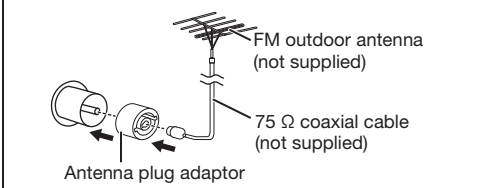
Connect the AC mains lead only after all the other connections have been made.
The illustrations shown are of the model for Australia and New Zealand. Your unit may differ in appearance.



1 Connect the FM indoor antenna.
Place the antenna where reception is best.

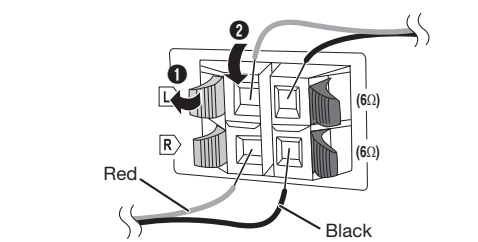
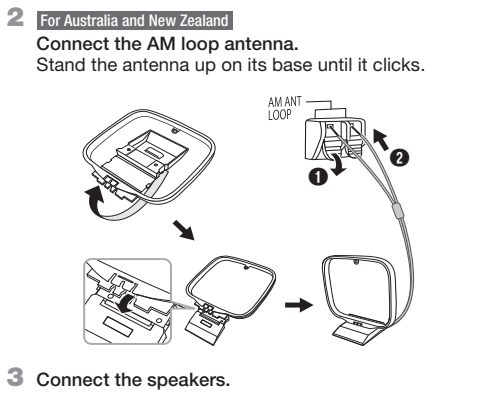


For the United Kingdom and Ireland
Connect the FM outdoor antenna.
Use an outdoor antenna if the reception is poor.



CAUTION!
Keep the antenna plug adaptor out of reach of children to prevent swallowing.

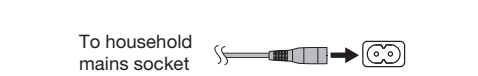
- Note:**
- Do not use the outdoor antenna during a lightning storm.
 - Disconnect the outdoor antenna if you do not use the system.



Be careful not to cross (short-circuit) or reverse the polarity of the speaker wires as doing so may damage the speakers.

4 Connect the AC mains lead.

(For the AC mains plug of three pins)
READ THE "Caution for AC mains lead" BEFORE CONNECTION.



Do not use an AC mains lead from other equipment.

Conserving power
The system consumes a small amount of power (➡ "Specifications") when it is in standby mode. Disconnect the power supply if you do not use the system.
Some settings will be lost after you disconnect the system. You have to set them again.

Limited Warranty (Australia)

Panasonic Warranty

- The product is warranted for 12 months from the date of purchase. Subject to the conditions of this warranty Panasonic or its Authorised Service Centre will perform necessary service on the product without charge for parts or labour, if in the opinion of Panasonic, the product is found to be faulty within the warranty period.
- This warranty only applies to Panasonic products purchased in Australia and sold by Panasonic Australia or its Authorised Distributors or Dealers and only where the products are used and serviced within Australia or it's territories. Warranty cover only applies to service carried out by a Panasonic Authorised Service Centre and only if valid proof of purchase is presented when warranty service is requested.
- This warranty only applies if the product has been installed and used in accordance with the manufacturer's recommendations (as noted in the operating instructions) under normal use and reasonable care (in the opinion of Panasonic). The warranty covers normal domestic use only and does not cover damage, malfunction or failure resulting from use of incorrect voltages, incorrect installation, accident, misuse, neglect, build-up of dirt or dust, abuse, maladjustment of customer controls, mains supply problems, thunderstorm activity, infestation by insects or vermin, tampering or repair by unauthorised persons (including unauthorised alterations), introduction of sand, humidity or liquids, commercial use such as hotel, office, restaurant, or other business or rental use of the product, exposure to abnormally corrosive conditions or any foreign object or matter having entered the product.
- This warranty does not cover the following items unless the fault or defect existed at the time of purchase:
 - (a) Cabinet Part(s)
 - (b) Video or Audio Tapes
 - (c) SD cards or USB devices
 - (d) User replaceable Batteries
 - (e) DVD, Blu-ray or Recordable Discs
 - (f) Video / Audio Heads from wear and tear in normal use
 - (g) Information stored on Hard Disk Drive, USB stick or SD card
 - (h) DTV reception issues caused by TV Aerial / Cabling / Wall socket(s) etc
- Some products may be supplied with Ethernet connection hardware. The warranty is limited on such products and will not cover:
 - (a) Internet and/or DLNA connection / setup related problems
 - (b) Access fees and/or charges incurred for internet connection
 - (c) The use of incompatible software or software not specifically stipulated in the product operations manual; and
 - (d) Any indirect or consequential costs associated with the incorrect use or misuse of the hardware, its connection to the internet or any other device.
- To claim warranty service, when required, you should:
 - Telephone Panasonic's Customer Care Centre on 132600 or visit our website referred to below and use the Service Centre Locator for the name/address of the nearest Authorised Service Centre.
 - Send or take the product to a Panasonic Authorised Service Centre together with your proof of purchase receipt as a proof of purchase date. Please note that freight and insurance to and / or from your nearest Authorised Service Centre must be arranged by you.
 - Note that home or pick-up/delivery service is available for the following products in the major metropolitan areas of Australia or the normal operating areas of the nearest Authorised Service Centres:
 - Plasma/LCD televisions / displays (screen size greater than 103 cm)
- The warranties hereby conferred do not extend to, and exclude, any costs associated with the installation, de-installation or re-installation of a product, including costs related to the mounting, de-mounting or remounting of any screen, (and any other ancillary activities), delivery, handling, freight, transportation or insurance of the product or any part thereof or replacement of and do not extend to, and exclude, any damage or loss occurring by reason of, during, associated with, or related to such installation, de-installation, re-installation or transit.

Panasonic Authorised Service Centres are located in major metropolitan areas and most regional centres of Australia, however, coverage will vary dependant on product. For advice on exact Authorised Service Centre locations for your product, please telephone our Customer Care Centre on 132600 or visit our website and use the Service Centre Locator.

In addition to your rights under this warranty, Panasonic products come with consumer guarantees that cannot be excluded under the Australian Consumer Law. If there is a major failure with the product, you can reject the product and elect to have a refund or to have the product replaced or if you wish you may elect to keep the goods and be compensated for the drop in value of the goods. You are also entitled to have the product repaired or replaced if the product fails to be of acceptable quality and the failure does not amount to a major failure.

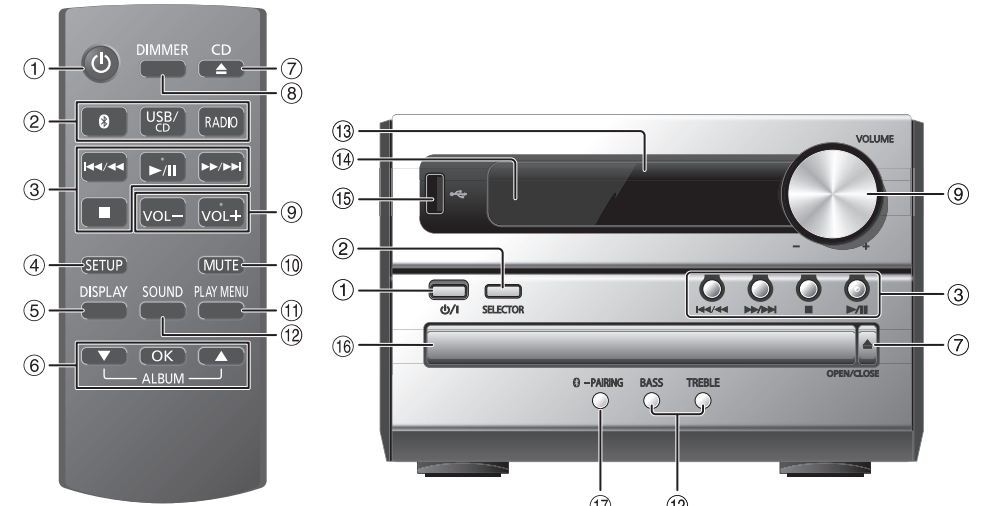
If there is a major failure in regard to the product which cannot be remedied then you must notify us within a reasonable period by contacting the Panasonic Customer Care Centre. If the failure of the product is not a major failure then Panasonic may choose to repair or replace the product and will do so in a reasonable period of time from receiving notice from you.

THIS WARRANTY CARD AND THE PURCHASE DOCKET (OR SIMILAR PROOF OF PURCHASE) SHOULD BE RETAINED BY THE CUSTOMER AT ALL TIMES

If you require assistance regarding warranty conditions or any other enquiries, please visit the **Panasonic Australia** website www.panasonic.com.au or contact by phone on **132 600**
If phoning in, please ensure you have your operating instructions available.

Overview of controls

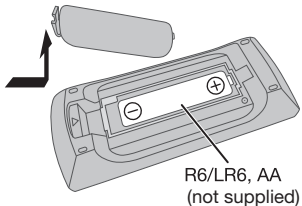
Do the procedures with the remote control. You can also use the buttons on the main unit if they are the same.



- Standby/on switch** [⏻], [⏻/⏿]
Press to switch the unit from on to standby mode or vice versa. In standby mode, the unit is still consuming a small amount of power.
- Select the audio source**
On the remote control:
Press the corresponding button to select the source.
On the main unit:
CD → BLUETOOTH → USB → FM → AM*
- Basic playback control**
- View the setup menu**
- View the content information**
- Select or confirm the option**
- Open or close the disc tray**
- Decrease the brightness of the display panel**
To cancel, press the button again.
- Adjust the volume level**
- Mute the sound**
To cancel, press the button again.
“MUTE” is also cancelled when you adjust the volume or when you switch off the system.
- View the play menu**
- Select the sound effects**
- Display panel**
- Remote control sensor**
Distance: Within approximately 7 m
Angle: Approximately 20° up and down, 30° left and right
- USB port** (←→)
- Disc tray**
- Select “BLUETOOTH” as the audio source**
To start Bluetooth® pairing, press and hold the button.

* [⏻] For Australia and New Zealand

Preparing the remote control



Use alkaline or manganese battery.
Install the battery so that the poles (+ and −) align with those in the remote control.

Improving the sound quality

When “FM” is selected

- Press [PLAY MENU] repeatedly to select “FM MODE”.
- Press [▲, ▼] to select “MONO” and then press [OK].
To cancel, select “STEREO”.
“MONO” is also cancelled when you change the frequency.

To memorise the setting

Continue with step 4 of “Manual presetting”.

Checking the signal status

When “FM” is selected

[⏻] For Continental Europe, the United Kingdom and Ireland

Press [PLAY MENU] repeatedly to select “FM STATUS” and then press [OK].

[⏻] For others

Press [DISPLAY].

FM	The FM signal is in monaural. The system is not tuned in to a station.
FM ST	The FM signal is in stereo.
FM MONO	“MONO” is selected as the “FM MODE”.

RDS broadcasting

[⏻] For Continental Europe, the United Kingdom and Ireland

This system can show the text data transmitted by the radio data system (RDS) available in some areas.

Press [DISPLAY].

PS	Programme service
PTY	Programme type
FREQ	Frequency

Note:
RDS may not be available if the reception is poor.

AM allocation setting

[⏻] For Australia and New Zealand

This system can also receive AM broadcasts allocated in 10 kHz steps.

- Press [RADIO] to select “AM”.
- Press and hold [SELECTOR] on the main unit.

After a few seconds, the display panel shows the current minimum radio frequency. Release the button when the minimum frequency changes.

- To go back to the initial setting, do the above steps again.
- Preset frequencies are erased after you change the setting.

Preparing the media

Disc

- Press [CD ▶] (main unit: [▶] OPEN/CLOSE) to open the disc tray.
Put in a disc with the label facing up.



Press again to close the disc tray.

- Press [USB/CD] to select “CD”.

USB

- Reduce the volume and connect the USB device to the USB port.
Hold the main unit when connecting or disconnecting the USB device.



- Press [USB/CD] to select “USB”.

Note:
Do not use a USB extension cable. The system cannot recognise USB device connected through a cable.

Bluetooth®

You can connect and play an audio device wirelessly through Bluetooth®.

Preparation

- Switch on the Bluetooth® feature of the device and put the device near the system.
- Read the operating instructions of the device for details.

Pairing a device

Preparation
If this system is connected to a Bluetooth® device, disconnect it (⇒ “Disconnecting a device”).

- Press [⓪].
If “PAIRING” is shown, continue with step 4.
- Press [PLAY MENU] to select “PAIRING”.
Or press and hold [⓪ –PAIRING] on the main unit until “PAIRING” is shown. Continue with step 4.

- Press [▲, ▼] to select “OK? YES” and then press [OK].
“PAIRING” is shown.
To cancel, select “OK? NO”.
- Select “SC-PM250” from the Bluetooth® menu of the device.
If prompted for a passkey, input “0000”.
The device connects with this system automatically after pairing is complete.
The name of the connected device is shown for a few seconds.

Note:
You can pair up to 8 devices with this system. If a 9th device is paired, the device that has not been used for the longest time will be replaced.

Connecting a device

Preparation

If this system is connected to a Bluetooth® device, disconnect it (⇒ “Disconnecting a device”).

- Press [⓪].
“BLUETOOTH READY” is shown.
- Select “SC-PM250” from the Bluetooth® menu of the device.
The name of the connected device is shown for a few seconds.
- Start playback on the device.

Note:

- A device must be paired to connect.
- This system can only connect to one device at a time.
- When “BLUETOOTH” is selected as the source, this system will automatically try to connect to the last connected device.

Disconnecting a device

- Press [⓪].
- Press [PLAY MENU] repeatedly to select “DISCONNECT?”.
- Press [▲, ▼] to select “OK? YES” and then press [OK].
“BLUETOOTH READY” is shown.
To cancel, select “OK? NO”.

Using the main unit

Press and hold [⓪ –PAIRING] until “PAIRING” is shown.

Note:

- A device is disconnected when you:
 - Select a different source.
 - Move the device out of the maximum range.
 - Disable the Bluetooth® transmission of the device.
 - Switch off the system or the device.

Media playback

The following marks indicate the availability of the feature.

CD	CD-R/RW in CD-DA format or with MP3 files.
USB	USB device with MP3 files.
BLUETOOTH	Bluetooth® device.

Basic playback

CD USB BLUETOOTH	
Play	Press [▶].
Stop	Press [■]. USB The track is memorised. “RESUME” is shown. Press again to stop fully.
Pause	Press [▶]. Press again to continue playback.
Skip	Press [◀◀] or [▶▶] to skip track. CD USB Press [▲ , ▼] to skip MP3 album.
Search	Press and hold [◀◀◀] or [▶▶▶].

Note:
Depending on the Bluetooth® device, some operations may not work.

Viewing available information

CD USB BLUETOOTH

You can view the available information on the display panel.

Press [DISPLAY].

Note:

- Maximum characters that can be shown:
 - CD USB: approximately 32
 - BLUETOOTH: approximately 16
- This system supports ver. 1.0, 1.1 and 2.3 ID3 tags.
- Text data that the system does not support can show differently.
- Example: MP3 album and track number display.

00021050
Album number
Track number

Troubleshooting

Before requesting service, make the following checks. If you are in doubt about some of the check points, or if the solutions indicated do not solve the problem, consult your dealer for instructions.

Common problems

No operations can be done with the remote control.

- Examine that the battery is installed correctly.

Sound is distorted or no sound.

- Adjust the volume of the system.
- Switch off the system, determine and correct the cause, and then switch on again. It can be caused by straining of the speakers through excessive volume or power, and when using the system in a hot environment.

A humming sound can be heard during playback.

- An AC mains lead or fluorescent light is near the cables. Keep other appliances and cords away from the cables of this system.

Disc

Display not shown correctly.

Playback does not start.

- You have not put in the disc correctly. Put it in correctly.
- Disc is dirty. Clean the disc.
- Replace the disc if it is scratched, warped, or non-standard.
- There is condensation. Let the system dry for 1 to 2 hours.

Checking the software version

- Press [SETUP] repeatedly to select “SW VER.” and then press [OK].
The software version is shown.
- Press [OK] again to exit.

USB

The USB device or the contents in it cannot be read.

- The format of the USB device or the contents in it are not compatible with the system.
- USB devices with storage capacity of more than 32 GB cannot work in some conditions.

Slow operation of the USB device.

- Large content size or large memory USB device takes longer time to read.

The elapsed time shown is different from the actual play time.

- Transfer the data to another USB device or backup the data and reformat the USB device.

Radio

Sound is distorted.

- Use an optional outdoor antenna. The antenna should be installed by a competent technician.

A beat sound is heard.

- Switch off the TV or move it away from the system.
- Move mobile telephones away from the system if the interference is apparent.

A low hum is heard during AM broadcast.

- Separate the antenna from other cables and cords.

Play menu

CD USB

- Press [PLAY MENU] repeatedly to select “PLAYMODE” or “REPEAT”.
- Press [▲, ▼] to select the setting and then press [OK].

PLAYMODE	
OFF	Cancel the setting.
PLAYMODE	
1-TRACK 1TR	Play one selected track. Press [◀◀ / ◀◀] or [▶▶ / ▶▶] to select the track.
1-ALBUM 1ALBUM	Play one selected MP3 album. Press [▲ , ▼] to select the MP3 album.
RANDOM RND	Play all tracks randomly.
1-ALBUM RANDOM 1ALBUM RND	Play all tracks in one selected MP3 album randomly. Press [▲ , ▼] to select the MP3 album.
REPEAT	
OFF REPEAT	Cancel the setting.
ON REPEAT	Repeat playback.

Note:

- During random playback, you cannot skip to tracks which have been played.
- The setting is cancelled when you open the disc tray.

Link mode

BLUETOOTH

You can change the link mode to suit the connection type.

Preparation

If this system is connected to a Bluetooth® device, disconnect it (⇒ “Disconnecting a device”).

- Press [PLAY MENU] repeatedly to select “LINK MODE”.
- Press [▲, ▼] to select the mode and then press [OK].

MODE 1	Emphasis on connectivity.
MODE 2 (default)	Emphasis on sound quality.

Input level

BLUETOOTH

You can change the input level setting if the sound input level of the Bluetooth® transmission is too low.

- Press [PLAY MENU] repeatedly to select “INPUT LEVEL”.
- Press [▲, ▼] to select the level and then press [OK].

LEVEL 0 ↔ LEVEL +1 ↔ LEVEL +2
(default)

Note:
Select “LEVEL 0” if the sound is distorted.

Note on disc

- This system can play CD-R/RW with CD-DA or MP3 format content.
- Some CD-R/RW cannot be played because of the condition of the recording.

Note on USB device

- This system supports USB 2.0 full speed.
- This system can support USB devices of up to 32 GB.
- Only FAT 12/16/32 file system is supported.

Note on MP3 file

- Files are defined as tracks and folders are defined as albums.
- Tracks must have the extension “.mp3” or “.MP3”.
- Tracks will not necessarily be played in the order you recorded them.
- Some files can fail to work because of the sector size.

MP3 file on disc

- This system can access up to:
 - 255 albums (including root folder)
 - 999 tracks
 - 20 sessions
- Disc must conform to ISO9660 level 1 or 2 (except for extended formats).

MP3 file on USB device

- This system can access up to:
 - 800 albums (including root folder)
 - 8000 tracks
 - 999 tracks in one album

Radio

Preparation

[⏻] For Australia and New Zealand

Press [RADIO] to select “FM” or “AM”.

[⏻] For others

Press [RADIO].

Manual tuning

- Press [PLAY MENU] repeatedly to select “TUNEMODE”.
- Press [▲, ▼] to select “MANUAL” and then press [OK].
- Press [◀◀/◀◀] or [▶▶/▶▶] to tune in to the station.
To tune automatically, press and hold the button until the frequency starts changing quickly.
“STEREO” is shown when a stereo broadcast is being received.

Memory presetting

You can preset up to 30 FM stations.

[⏻] For Australia and New Zealand

You can preset up to 15 AM stations.

Automatic presetting

- Press [PLAY MENU] to select “A.PRESET”.
- Press [▲, ▼] to select the setting and then press [OK].

LOWEST	Tuning begins from the lowest frequency.
CURRENT	Tuning begins from the current frequency.

The tuner presets all the stations it can receive into the channels in ascending order.
To cancel, press [■].

Manual presetting

- Press [PLAY MENU] repeatedly to select “TUNEMODE”.
- Press [▲, ▼] to select “MANUAL” and then press [OK].
- Press [◀◀/◀◀] or [▶▶/▶▶] to tune in to the station.
- Press [OK].
- Press [▲, ▼] to select a preset number and then press [OK].
Do steps 3 through 5 again to preset more stations.
The new station replaces any station that occupies the same preset number.

Selecting a preset station

- Press [PLAY MENU] repeatedly to select “TUNEMODE”.
- Press [▲, ▼] to select “PRESET” and then press [OK].
- Press [◀◀/◀◀] or [▶▶/▶▶] to select the preset station.

About Bluetooth®

Panasonic cannot be held responsible for data and/or information that can possibly be compromised during a wireless transmission.

Frequency band

- This system uses the 2.4 GHz frequency band.

Certification

- This system conforms to the frequency restrictions and has received certification based on frequency laws. Thus, a wireless permit is not necessary.
- The actions below are punishable by law:
 - Taking apart or modifying the main unit.
 - Removing specification indications.

Restrictions of use

- Wireless transmission and/or usage with all Bluetooth® equipped devices is not guaranteed.
- All devices must conform to standards set by Bluetooth SIG, Inc.
- Depending on the specifications and settings of a device, it can fail to connect or some operations can be different.
- This system supports Bluetooth® security features. But depending on the operating environment and/or settings, this security is possibly not sufficient. Transmit data wirelessly to this system with caution.
- This system cannot transmit data to a Bluetooth® device.

Range of use

- Use this device at a maximum range of 10 m.
- The range can decrease depending on the environment, obstacles or interference.

Interference from other devices

- This system may not function properly and troubles such as noise and sound jumps may arise due to radio wave interference if this unit is located too close to other Bluetooth® devices or the devices that use the 2.4 GHz band.
 - This system may not function properly if radio waves from a nearby broadcasting station, etc. is too strong.
- Intended usage**
 - This system is for normal, general use only.
 - Do not use this system near an equipment or in an environment that is sensitive to radio frequency interference (example: airports, hospitals, laboratories, etc.).

Licenses

MPEG Layer-3 audio coding technology licensed from Fraunhofer IIS and Thomson.

The Bluetooth® word mark and logos are owned by the Bluetooth SIG, Inc. and any use of such marks by Panasonic Corporation is under license. Other trademarks and trade names are those of their respective owners.